

Scale Valve (SD) Diverters

- Designed for use on top of silos
- Concurrently diverts air and product
- Temperature rating up to 250° F
- Available in cast iron, aluminum or stainless steel
- Handles operating pressures up to 15 PSI



Application

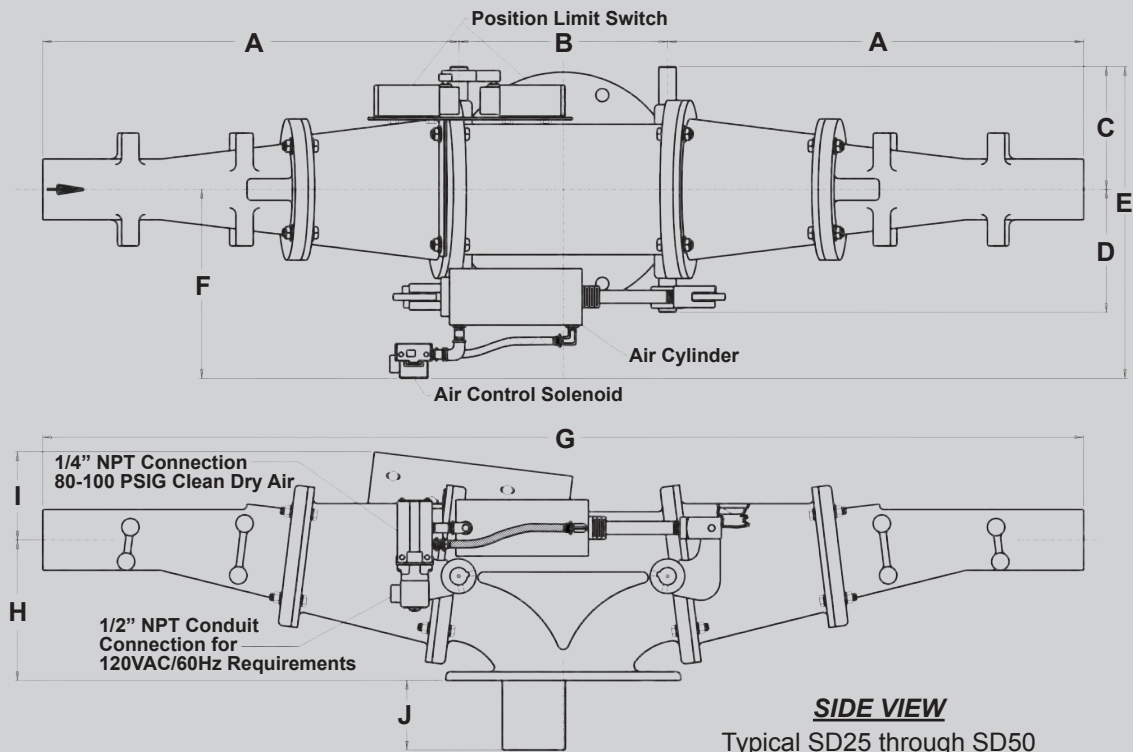
The Schenck Process Scale Valve (SD) Diverter is designed for use on top of silos and can concurrently divert air and product. Product is diverted into a receiving hopper while air continues into the return line back to the storage bin. When the desired

amount of product is delivered to the silo an electrical impulse from a level control or weigh scale triggers the SD and the valve automatically diverts the flow of product into the next receiver or back to storage.

Construction (material designation)			
	Cast Iron	Aluminum	Stainless Steel
Housing	3 parts Line adapter Cone section Body	3 parts Line adapter Cone section Body	3 parts Line adapter Cone section Body
Material	Gray iron Class 30 Cone section 356-T6	Aluminum alloy 356-T6	CF-8 cast stainless steel (304 stainless steel) Cone section 356-T6
Diverting Blades – Shafts	304 stainless steel	304 stainless steel	304 stainless steel
Sizes Available	2-1/2" x 6"	2-1/2" x 6"	3-1/2" 4" 4-1/2" 6"
Cone Section Sleeve	White polyurethane White nitrile	White polyurethane White or clear nitrile	White polyurethane White or clear nitrile
Divert Angle	90°	90°	90°
Diverter Pressure Rating	15 PSI	15 PSI	15 PSI
Temperature Rating	250° F Maximum	250° F Maximum	250° F Maximum
Option	Filter/lubricator assembly Oversized air cylinder Flanged connection on special order	Filter/lubricator assembly Oversized air cylinder Flanged connection on special order	Filter/lubricator assembly Oversized air cylinder Flanged connection on special order

Note: Line adapter and transition section denotes material of construction, cone section is always aluminum alloy.
 *2-1/2" and 3" are 3" with transition.

Scale Valve (SD) Diverter Dimensions

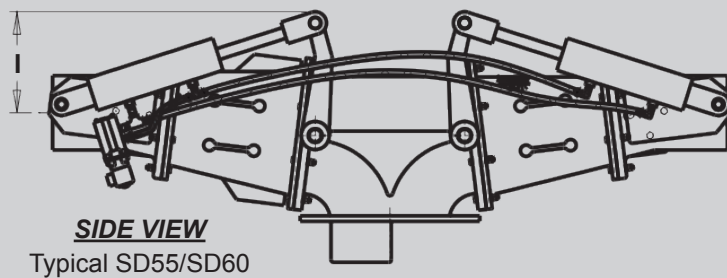


Features

- Stainless steel flapper and shaft
- Polyurethane or nitrile sleeve
- Standard plain end connections in pipe or tubing sizes. Flanged available by special order.

Options

- Limit switch proofing in NEMA 4 or NEMA 7/9
- Oversized air cylinder actuator
- Filter/lubricator assembly



Model	Dimensions (inches)										Weight (lbs.)		
	A	B	C	D	E	F	G	H	I	J	GI	SS	AL
SD25	20.28	9	5.81	5.81	15.19	9.38	49.56	6.25	4	4	101	101	54
SD30	15.28	9	5.81	5.81	15.19	9.38	39.56	5.94	4.31	4	98	98	53
SD35	23.94	12	7.25	6.81	18.13	10.88	59.88	8.06	5.06	4	166	166	97
SD40	23.94	12	7.06	7.06	18.19	11.13	59.88	7.88	5.25	4	171	171	99
SD45	23.94	12	7.06	7.06	18.13	11.06	59.88	7.63	5.5	4	171	171	99
SD50	24.44	12	7.06	7.06	18.13	10.75	60.88	7.56	5.56	4	171	171	99
SD55	24.72	13.31	8.25	8.75	17.25	9	62.75	10.19	8.38	3.63	282	282	204
SD60	23.38	13.31	8.25	9.31	17.38	9.13	60.06	9.63	8.94	3.63	284	284	206