

Rotary Level Indicators

Roto-Bin-Dicator®

- Few moving parts
- Motor heats cavity, reducing moisture build-up
- High and low level fail-safe protection

The Roto-Bin-Dicator® Rotary Level Indicator eliminates damage and waste from bin overflow, empty bins, clogged conveyors, and choked elevators. Applications include chemical, food, mining, plastics, ceramics, pulp and paper, grain, foundry, and cement.

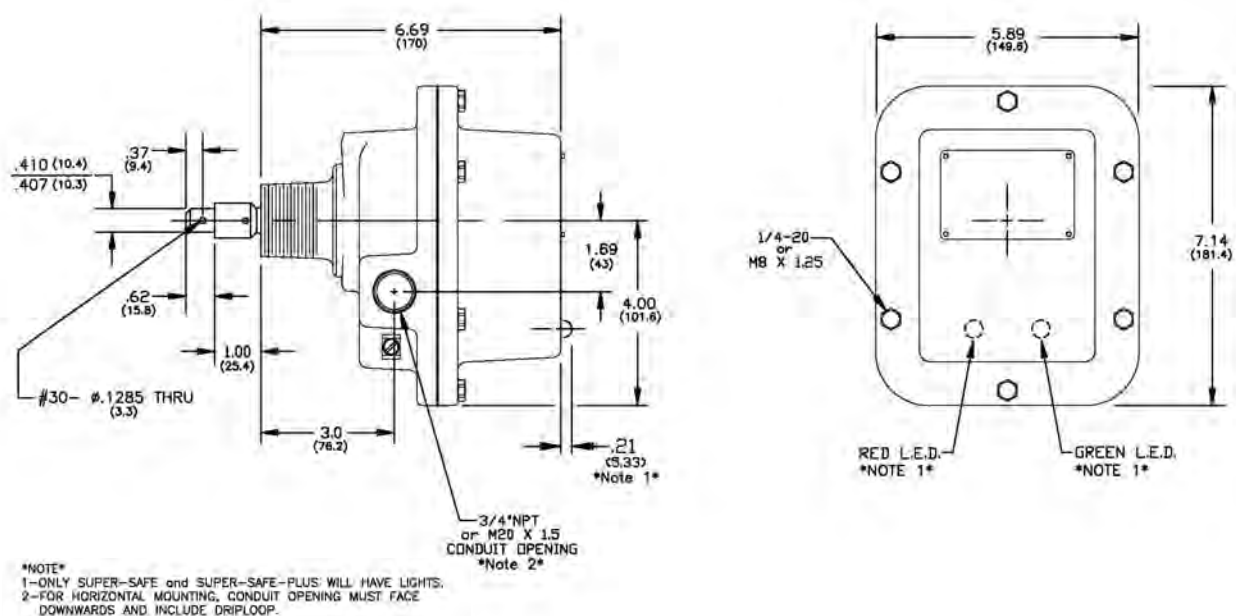
Versatile Rotary Level Indicator controls are recommended for the majority of dry material level control applications.



Benefits

- Easy to install
- No calibration required
- Simple mechanical device
- Test in place with magnetic key FOB
- SuperSafe versions
- Flexible
- Wide variety of paddle options
- Custom process fittings available
- Custom shaft extensions
- Mount in any orientation

Roto-Bin-Dicator® Dimensions



Specifications

Power Requirements	24/120/240 VAC, 24 VDC
Fail-Safe Operation	Low and high depending on model
Process Temperature	-40° to 200° F (-40° to 194° C) standard Higher temps achieved with optional extension
Switch or Relay Output	SPDT up to 10 amps dependent on version
Approvals	Approvals: UL (US and Canada) Ordinary & Hazardous Location; CE

Paddle Matrix

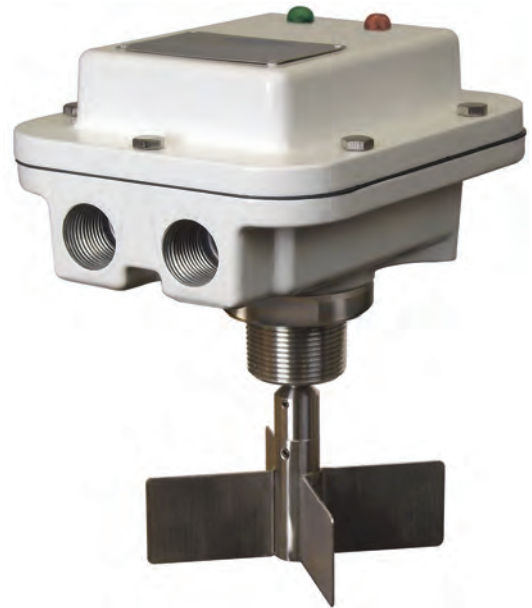
Model	Description	Material	Dimensions	Insertion Length	Application Considerations
H-370	4-Vane	Stainless steel	1.5" x 5"	3.75"	Med. weight material - max. particle size of 3/4"
H-371	4-Vane	Stainless steel	2" x 7"	3.75"	Light weight material - max. particle size 3/4"
H-373	Multiflex	Neoprene	1.5" x 24"	26.5"	Heavy large particle size
H-374	Multiflex	Stainless steel	1.5" x 17"	22"	Heavy large particle size; for higher temps.
H-379	Curved banana	Stainless steel	4.56" x 7.5"	8.25"	Low to med. weight materials Max. particle size 1/4"
H-372A	1-Vane with 45° cut	Stainless steel	1" x 2.88"	3.75"	Typically side mount, heavy material Max. particle size 1"
H-380	2-Vance collapsible	Stainless steel	Closed 5" x 8.75" Opened 7.5" x 1.22"	5.94"	Low to med. weight materials, highly aerated Max. particle size 1/4"

Rotary Level Indicators

Roto-Bin-Dicator® PRO

- Wide variety of paddle options
- Custom process fittings available
- Custom shaft extensions
- Mount in any orientation
- Red and green lights indicate power and alarm status

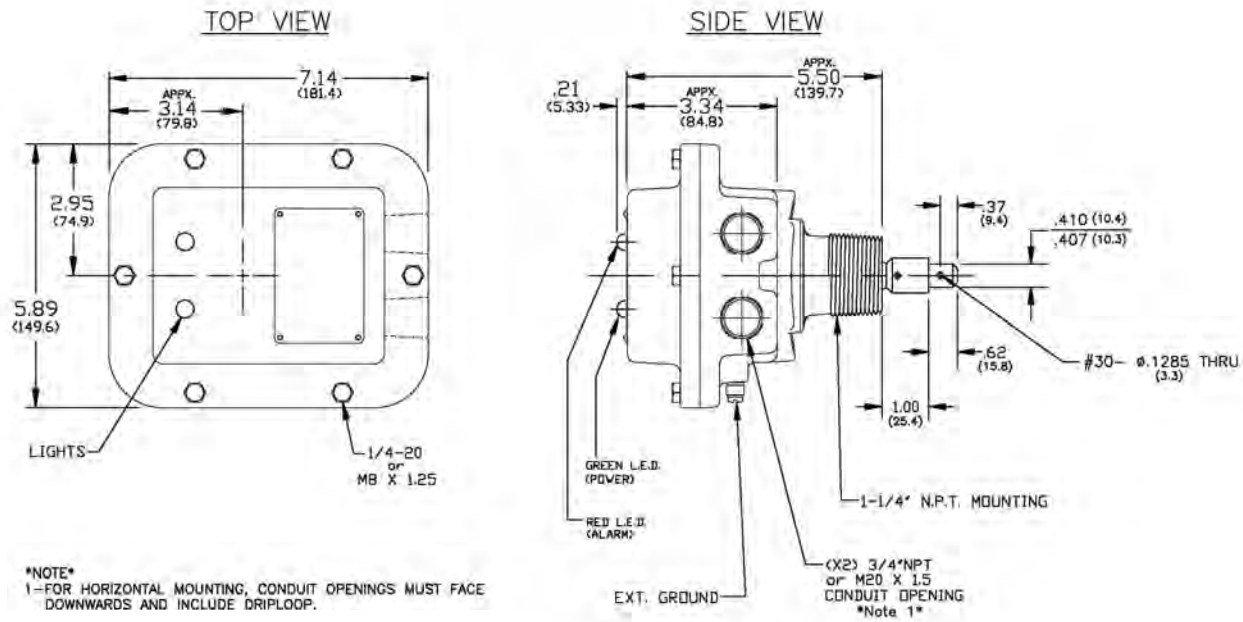
The Roto-Bin-Dicator® PRO paddle wheel is unique in the bulk solids industry with its ability to detect faults while the paddle is in material. It is a true fail-safe device that is able to perform complete self-diagnostics in and out of material, compared to other devices that only provide diagnostics when the paddle is out of material.



Benefits

- Self-diagnostics
- Supply voltage fault
- Motor not connected
- Motor failure
- Gear train failure
- Electronics temperature range
- Electronics fault

Roto-Bin-Dicator® PRO Dimensions



Specifications

Power Requirements	120 - 240 VAC 50/60 Hz or 24 - 48 VDC
Power Consumption	3 watts (1.8 watts in Pause Mode)
Process Temperature	-20° to 302° F (-29° to 150° C) standard Higher temps achieved with optional extension
Switch or Relay Output	Main Relay 8 A DPDT @ 240 VAC or 30 VDC (resistive); Auxiliary Relay: 0.46 A SPDT @ 150 VAC or 1 A @ 30 VDC
Approvals	Approvals: UL (US and Canada) Ordinary & Hazardous Location; CE

Paddle Matrix

Model	Description	Material	Dimensions	Insertion Length	Application Considerations
H-370	4-Vane	Stainless steel	1.5" x 5"	3.75"	Med. weight material - max. particle size of 3/4"
H-371	4-Vane	Stainless steel	2" x 7"	3.75"	Light weight material - max. particle size 3/4"
H-373	Multiflex	Neoprene	1.5" x 24"	26.5"	Heavy large particle size
H-374	Multiflex	Stainless steel	1.5" x 17"	22"	Heavy large particle size; for higher temps.
H-379	Curved banana	Stainless steel	4.56" x 7.5"	8.25"	Low to med. weight materials Max. particle size 1/4"
H-372A	1-Vane with 45° cut	Stainless steel	1" x 2.88"	3.75"	Typically side mount, heavy material Max. particle size 1"
H-380	2-Vance collapsible	Stainless steel	Closed 5" x 8.75" Opened 7.5" x 1.22"	5.94"	Low to med. weight materials, highly aerated Max. particle size 1/4"