

MULTIRAIL® Technology

The complete solution for a host requirements.



MULTIRAIL® diagnosis and weighing systems


Safe. Convenient. Low-maintenance.

For economical travel today, optimised vehicles and low-maintenance track are absolutely essential from new vehicle production to daily operation, or for repair and modernisation work with our range of MULTIRAIL® modules, we offer the perfect solutions for a host of monitoring and diagnostic tasks concerning wheels and rails.

Application	Research & Development	In Service	Maintenance & Repair
Standards	TRF, CEN, OIML, DIN	CEN, OIML, DIN	TRF, CEN, OIML, DIN



MULTIRAIL® know-how-components

- Experience
 - Consultation and service
 - Software
 - Weighing equipment
- 

MULTIRAIL® specialities



MULTIRAIL® certifications



MULTIRAIL® electronics



MULTIRAIL® sensors



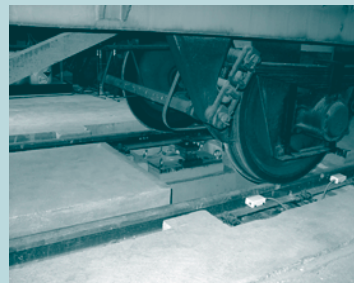
Measurement and optimisation.

The green light for your vehicle.



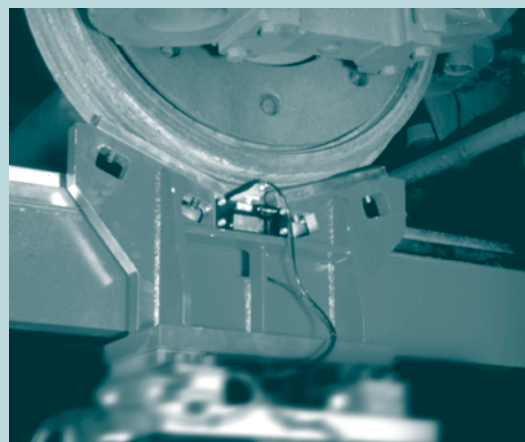
MULTIRAIL® WheelLoad

Quality assurance in vehicle production and maintenance is a must for optimum operational characteristics. Wheel and axle loads and perfect load distribution are decisive factors, all of which make an essential contribution to safety on the railways. Here various MULTIRAIL® modules are available, from simple wheel contact surface force measurement to the complete locomotive test-bed.

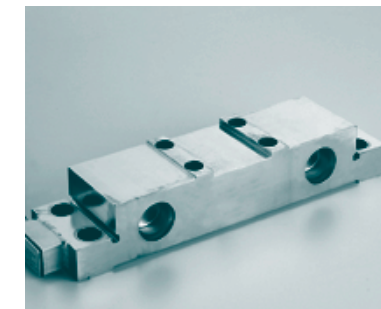
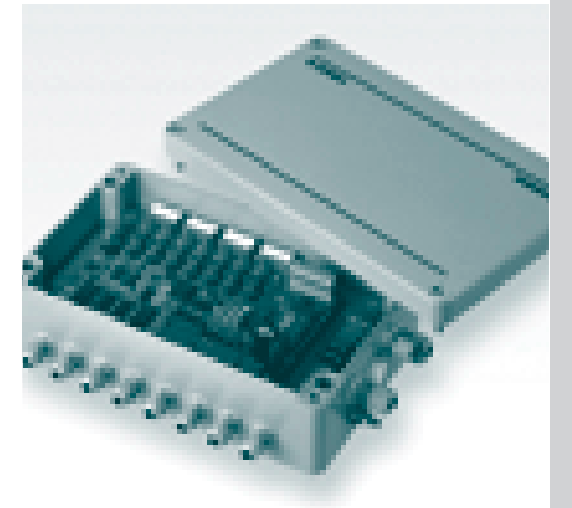


MULTIRAIL® WheelGeometry Diagnostics

Wheel profile, axle parallelism, axle separating distance – a great deal of geometric data must be checked and documented in the testing of rolling stock and locomotives.

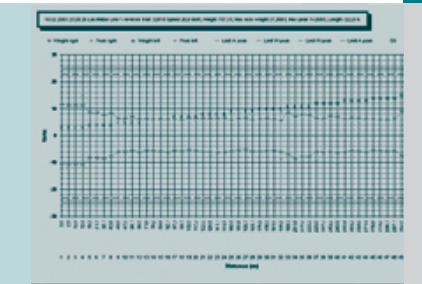


- ☒ Schenck Process MULTIRAIL® sensors for every application
- ☒ Calibration to TRF 0014
- ☒ Measurement rail option to TRF 0019
- ☒ With calibration
- ☒ Rail / PTB / EBA certification
- ☒ Software and data reporting to TRF
- ☒ Combined diagnosis systems



Diagnosis and detection.

For safety along the whole road.



- ☒ Schenck Process MULTIRAIL® sensors for every application
- ☒ Full-scan principle (WheelScan)
- ☒ Multi-scanner technology (HDS)
- ☒ Automatic wagon identification
- ☒ Advance calibration
- ☒ Certifications
- ☒ WEB reporting software
- ☒ Installation time less than 4 hours
- ☒ Operating temperature: -50 to +70 °C
- ☒ Weighing at "line speed"

MULTIRAIL® WheelScan

Cost savings you can count on, for safety checks and early diagnosis. With WheelScan the operator can monitor wheel and axle loads during operation, and diagnose any roundness deviations immediately, calculating route loads and thereby reducing damage to railway lines and vehicles. Safety that makes itself worthwhile.

MULTIRAIL® HotboxDetectorSystem

Hot-running location systems detect hot-running bearings and critical brake conditions – quickly and with great reliability.

MULTIRAIL® WheelProfileDiagnostics

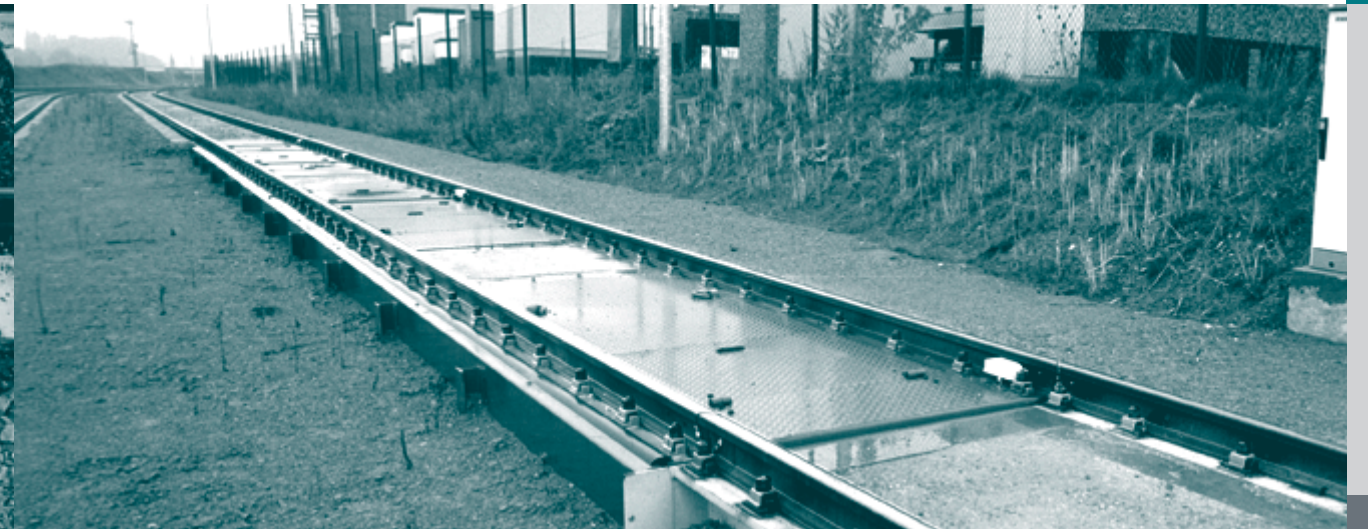
Wheel profile diagnosis for in-service use uses robust measuring technology to determine the current condition of the wheel profile without the need for manual intervention. A major contribution to vehicle maintenance and to knowing the condition of the vehicles using your rail system.



Loading and weighing.



Correct weighing every time.



MULTIRAIL® MULTIBRIDGE

Conventional weighbridges weigh with calibrated accuracy, either statically or dynamically. Ideal for loading and unloading of high-value solid and liquid materials.

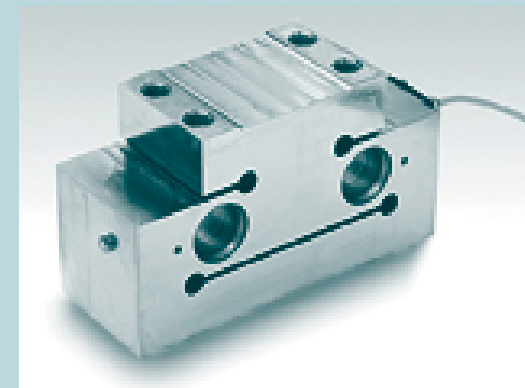


MULTIRAIL® LegalWeight

Destined to be a classic – the dynamic rail weighbridge for all lines, gap-free and with the well-known Schenck Process weighing sleepers. Highly accurate and reliable.

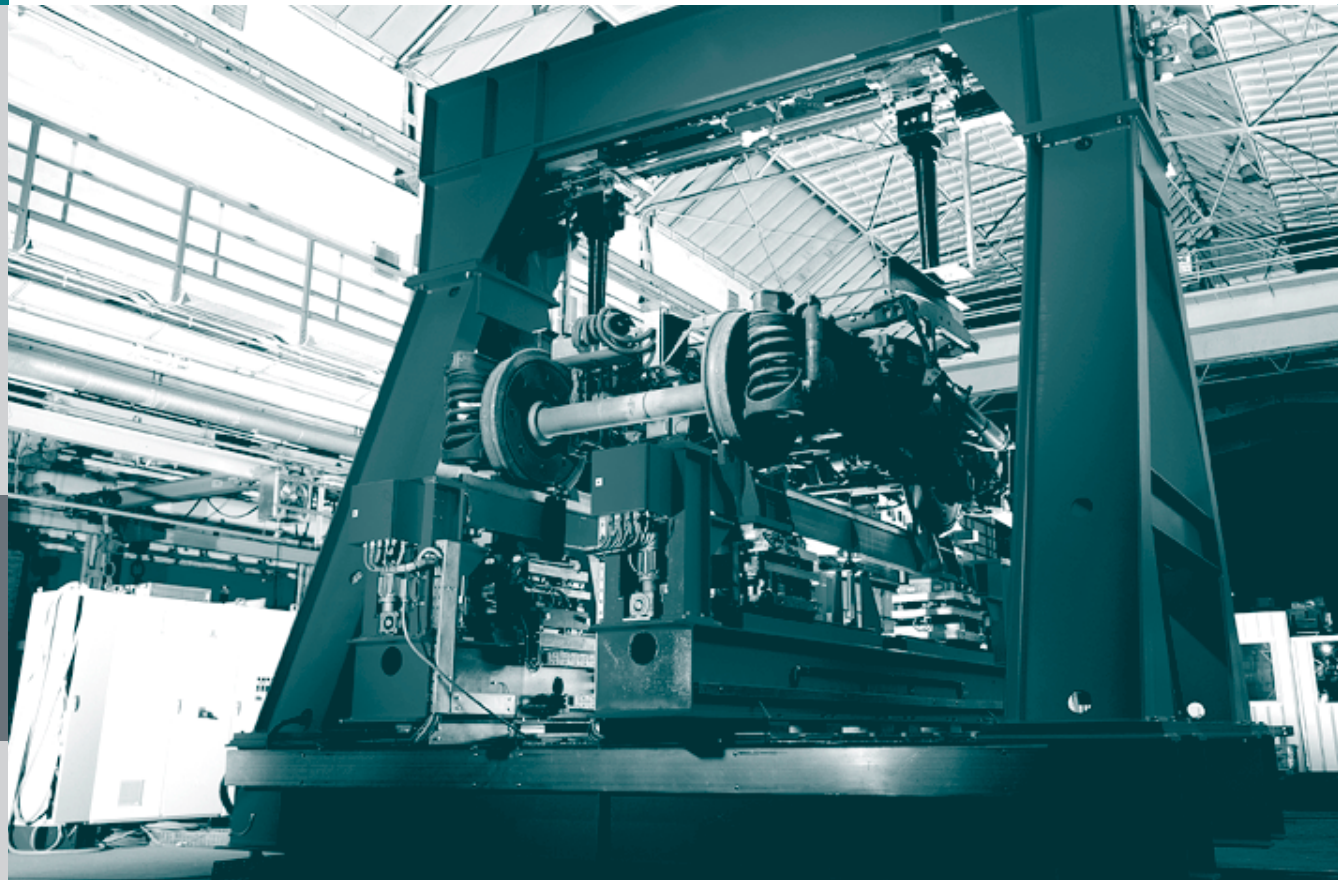


- ☒ Schenck Process calibrated weighing sensors
- ☒ Certifications
- ☒ Application also in areas subject to explosion risks
- ☒ For solid and liquid materials
- ☒ Calibrated for vehicle speeds of up to 40 km/h
- ☒ Ballast adhesion for long-term stability
- ☒ Integral control scales with MULTIRAIL® LegalWeight (option)

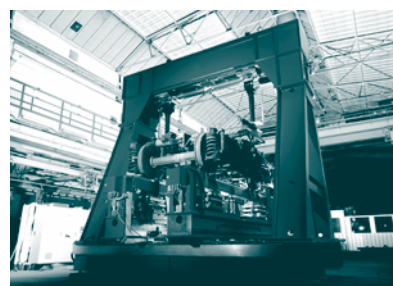
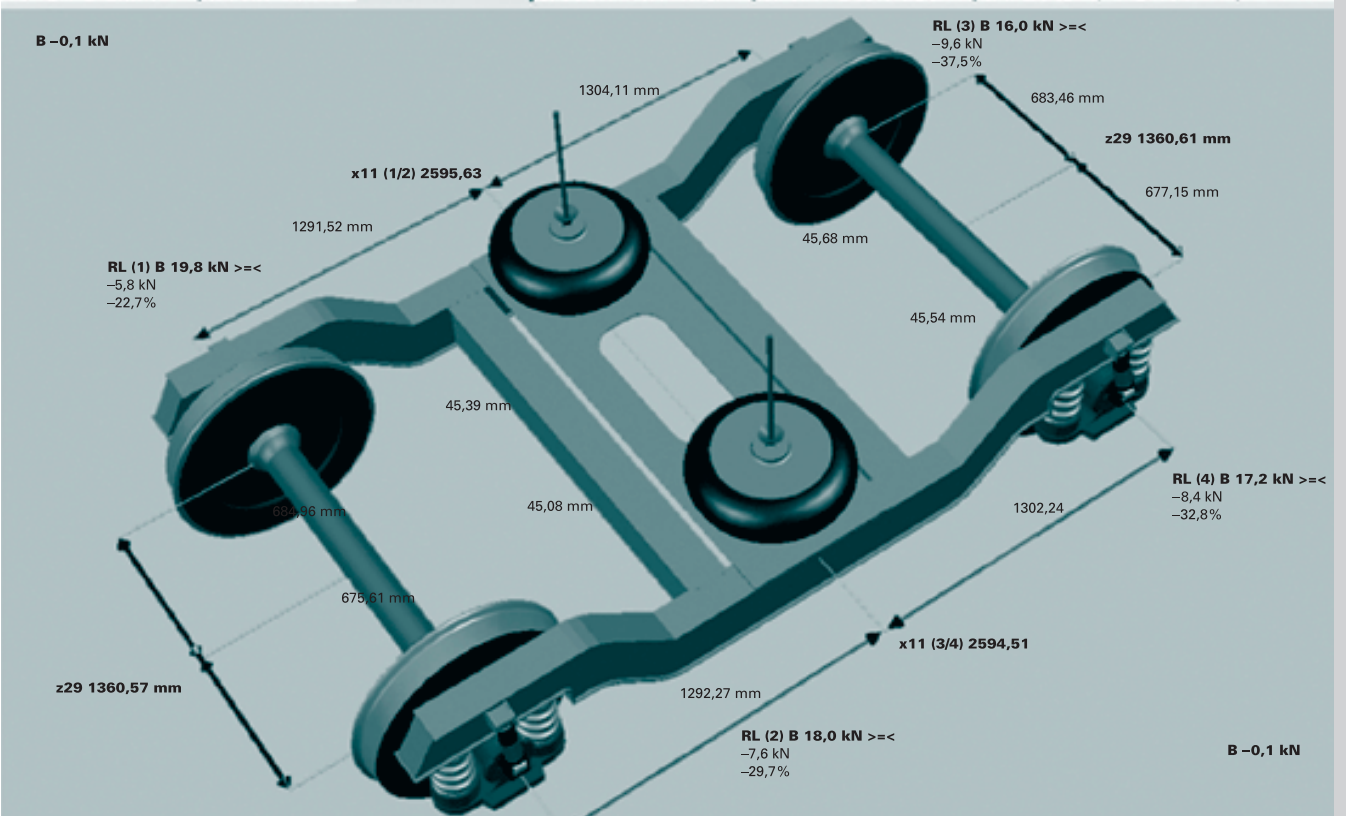


Measurement and optimisation.

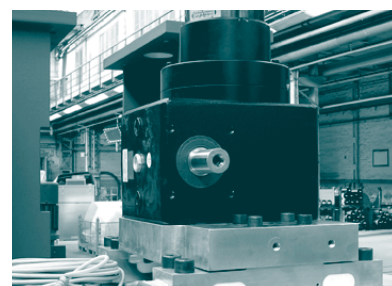
Precision on the test-bed.



- ☑ Schenck Process MULTIRAIL® sensors for every application
- ☑ Calibration fittings to TRF
- ☑ With calibration
- ☑ Rail / PTB / EBA certification
- ☑ Software and data reporting to TRF
- ☑ Combined diagnosis systems



MULTIRAIL® BogieLoad
The completely electro-mechanical bogie test-bed – for the efficient testing of your running gear.



MULTIRAIL® CornerLoad
Corner load measurement determines the load distribution of the superstructure using direct force measurement equipment to DIN 25045.



MULTIRAIL® OverLoad
Lifting jack systems are monitored for overload and uneven load distribution, for reliable prevention of accidents.